

Your airport: your views a world of opportunities



Preparing a new Master Plan: Public consultation

Planning, Housing and Economic Development Policy Development and Scrutiny Panel

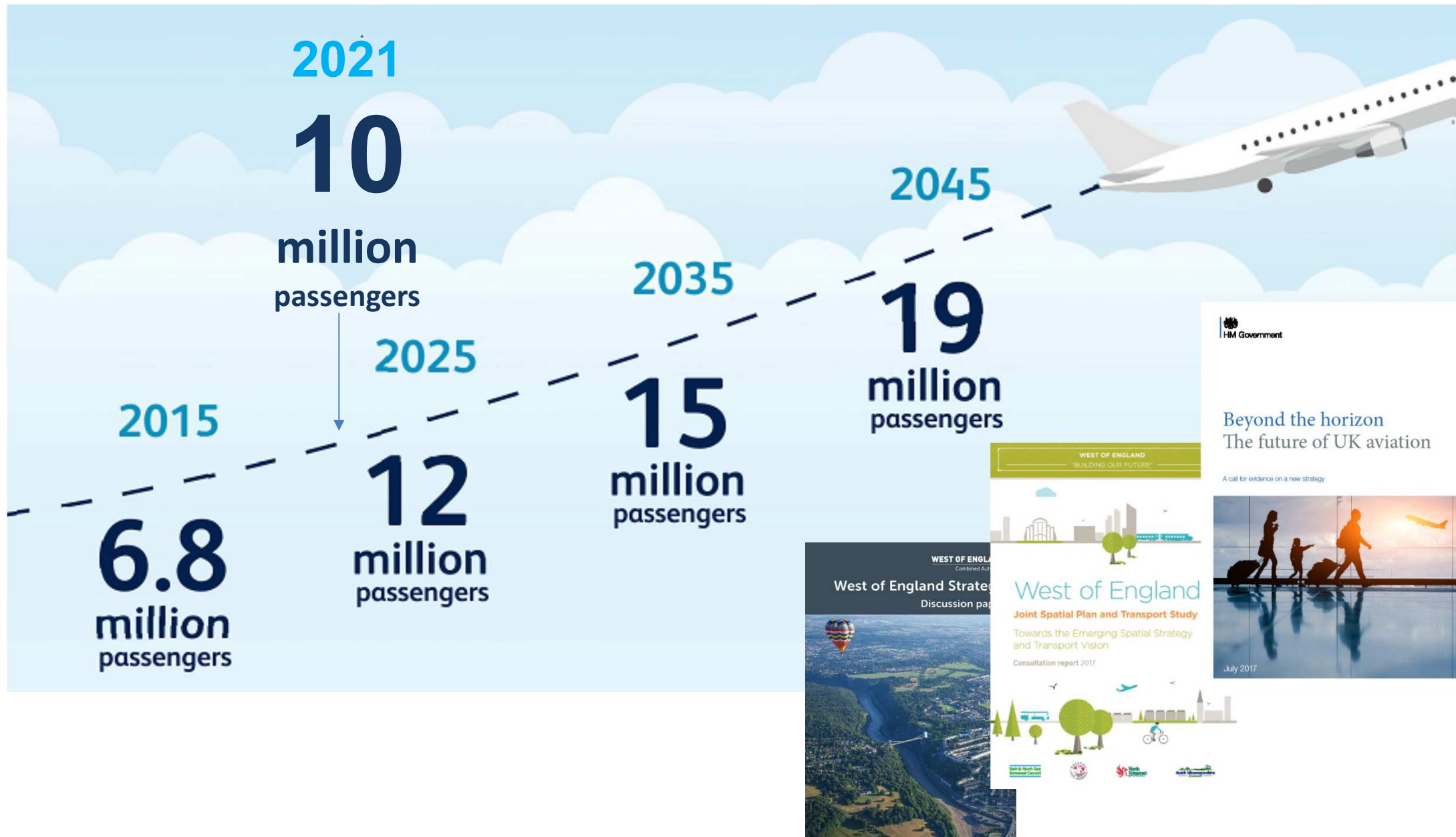
Bath & North East Somerset Council

16 January 2018

Preparing our new Master Plan

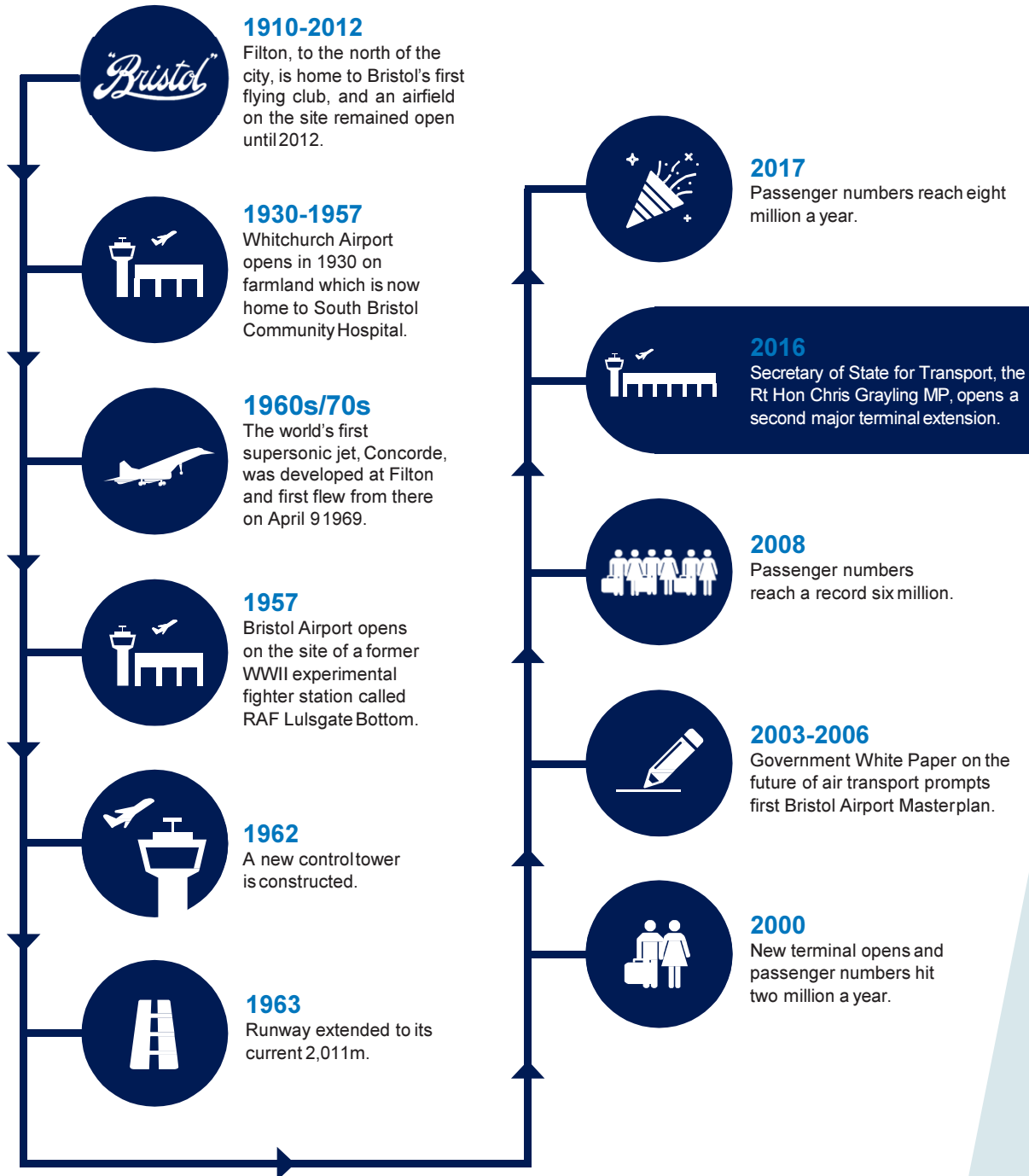
- 2003 'Future of Air Transport' White Paper required airports to produce Master Plans.
- First Master Plan published in 2006, including detailed development proposals to accommodate growth to 2015, with indicative plans showing how the airport might expand to handle 12.5 million passengers by 2030.
- Planning permission granted in 2011 for development of facilities to handle 10 million passengers per annum (mppa). Major elements of this development are nearing completion and passenger numbers have passed 8mppa.
- Purpose of Master Plans is *"to provide a clear statement of intent on the part of an airport operator enable future development...to be given due consideration in local planning processes."*
- Content should include infrastructure proposals; safeguarding and land/property take; impact on people and the natural environment; and proposals to minimise and mitigate impacts.
- This consultation will seek feedback on our priorities and initial concepts. Feedback will help shape our Draft Master Plan.

Regional and national context



Bristol Airport

Past | Present | Future



Celebrating 60 years

Our story: **Where we are**

now

**Connecting the world:
Bristol Airport's direct route
network 2017**

“

...over 20% of our business comes from overseas and, in particular, from the USA and other European countries. The successful development of Bristol Airport and its route network to key markets has made a significant contribution to this growth...

Peter Rollins
Director of Marketing & Communications
Thermae Bath Spa

“

Increasing regional connectivity boosts growth from tourism domestically and internationally, making it easier for visitors to see more of Britain and spreading the economic benefits of tourism across the nations.

Sally Balcombe
Chief Executive, Visit Britain

”

Our story: Looking ahead

Bristol Airport
Past | Present | Future



51%

of people identifying
as 'global citizens'
(BBC World Service poll, 2016)



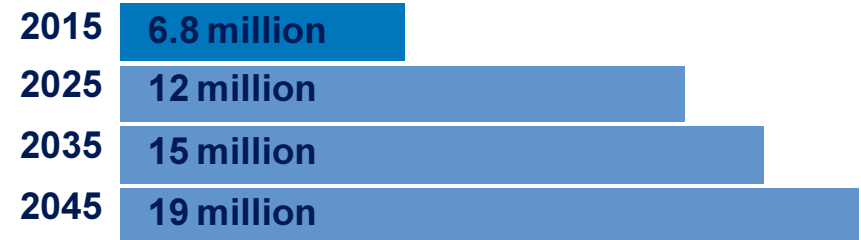
50 billion

connected devices by 2020
(Cisco)

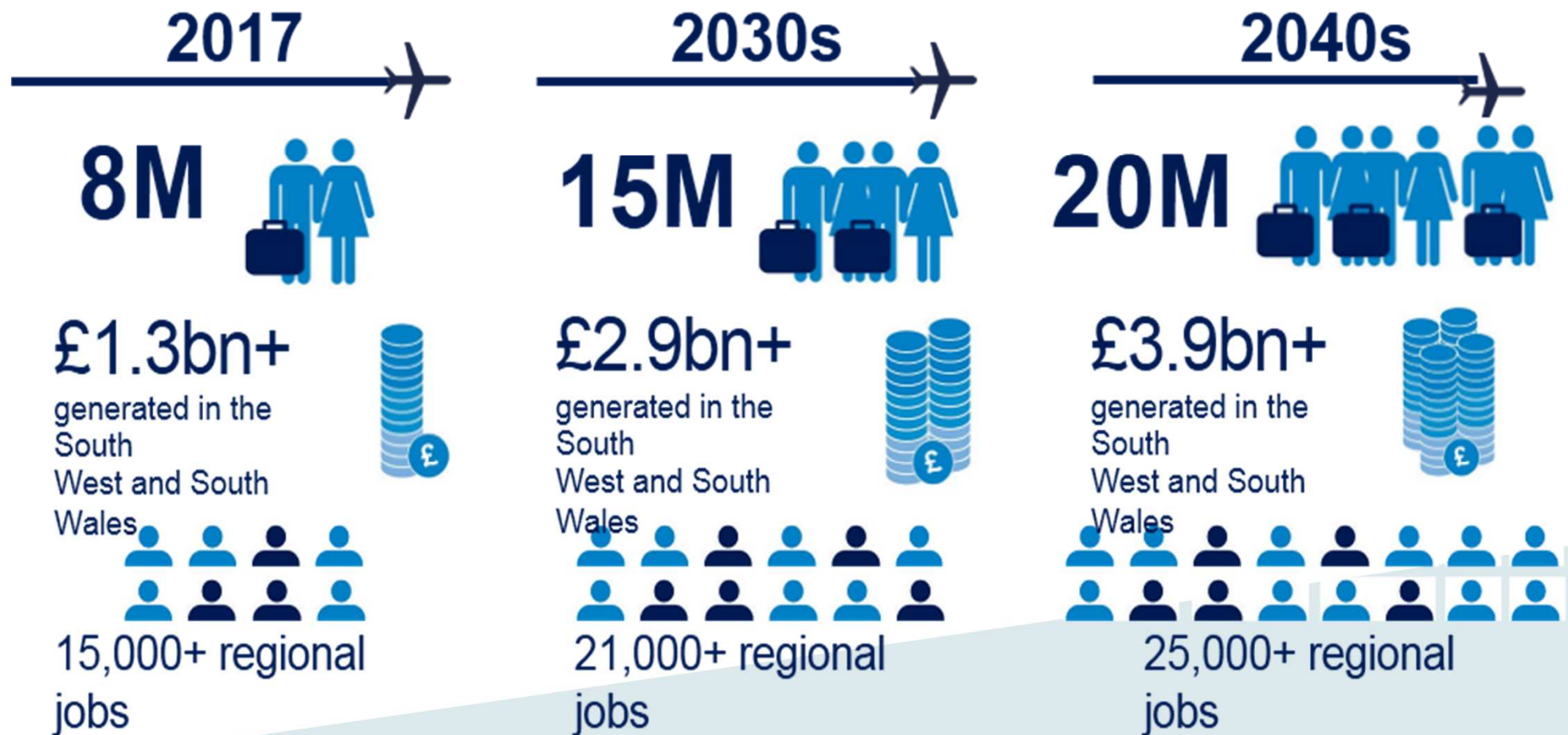
Aircraft today are **75%** quieter
than they were 50 years ago



Passenger forecast (millions per year)



Estimated present and future economic impact of Bristol Airport ²⁴





Our five pillars

To make sure we get the best possible outcome for our passengers, neighbours and the region as a whole, our new Master Plan will be guided by five pillars.

A world leading regional airport

Delivering easy and convenient access, excellent on-time performance, friendly and efficient customer service, a great range of destinations, state-of-the-art facilities and a distinctive sense of place that reflects the unique part of the world we serve.

Employment and supporting economic growth

Creating employment and supporting economic growth by connecting the South West of England and South Wales to new markets, talent and tourists.

At the heart of an integrated transport network

Making Bristol Airport an integrated transport hub by bringing together different modes of transport, not just for our passengers and staff, but also for people travelling within, to and through the region.

Sustainable approach

Seeking to reduce and mitigate our effect on communities and the environment, locally and globally, as well as finding opportunities to deliver enhancements.

Deliverability

Developing proposals which are flexible enough to be delivered in phases to meet demand, and which represent value for money for passengers, airlines and other stakeholders.

Design considerations: supporting the five pillars

Key land use issues influencing airport layout

Access off the A38

Employment & related development

Fuel provision

Green Belt

Land acquisition

Mass transit and car parking

Place and locality

Sustainability & green infrastructure

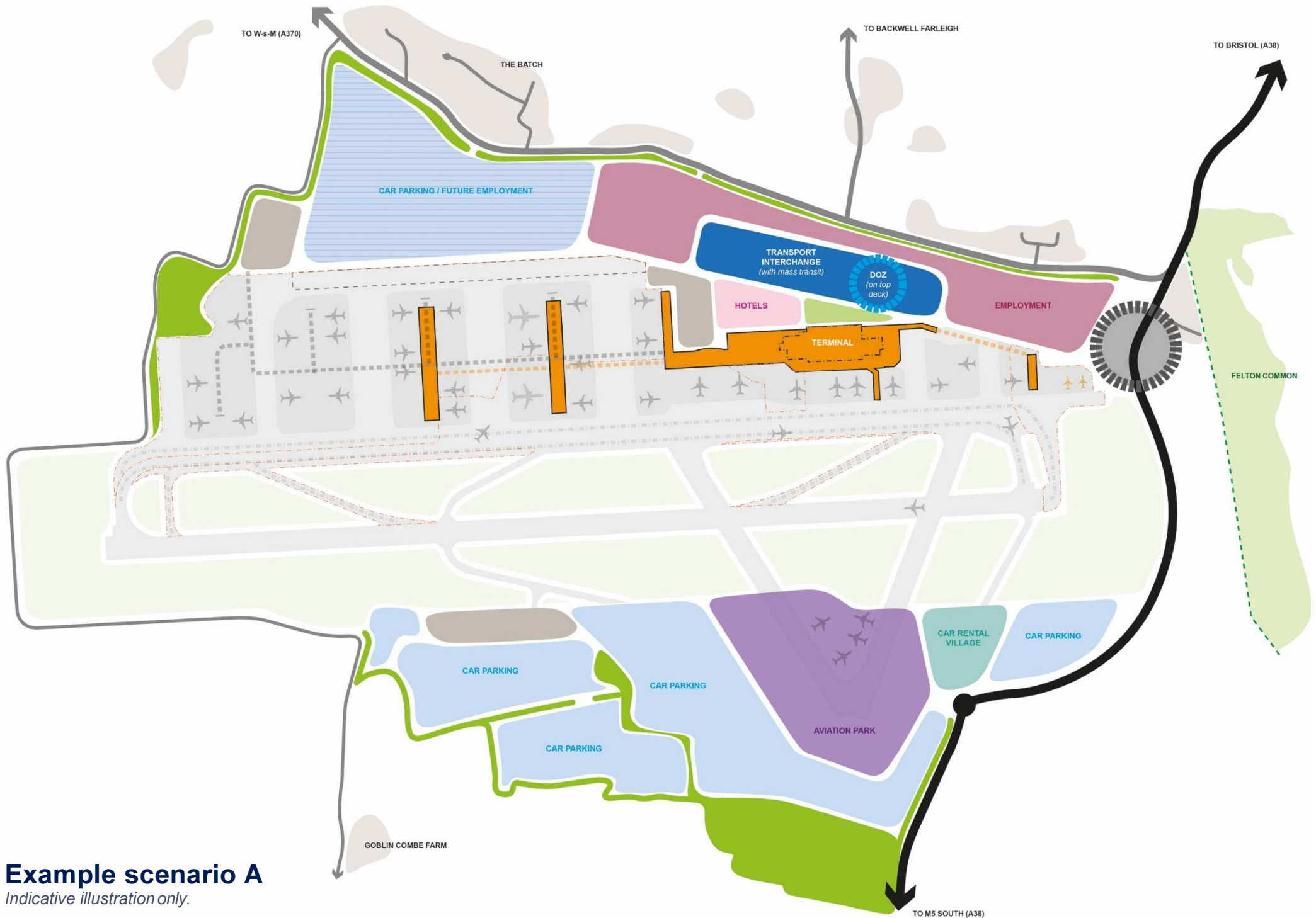
Terminals

Topography and visibility





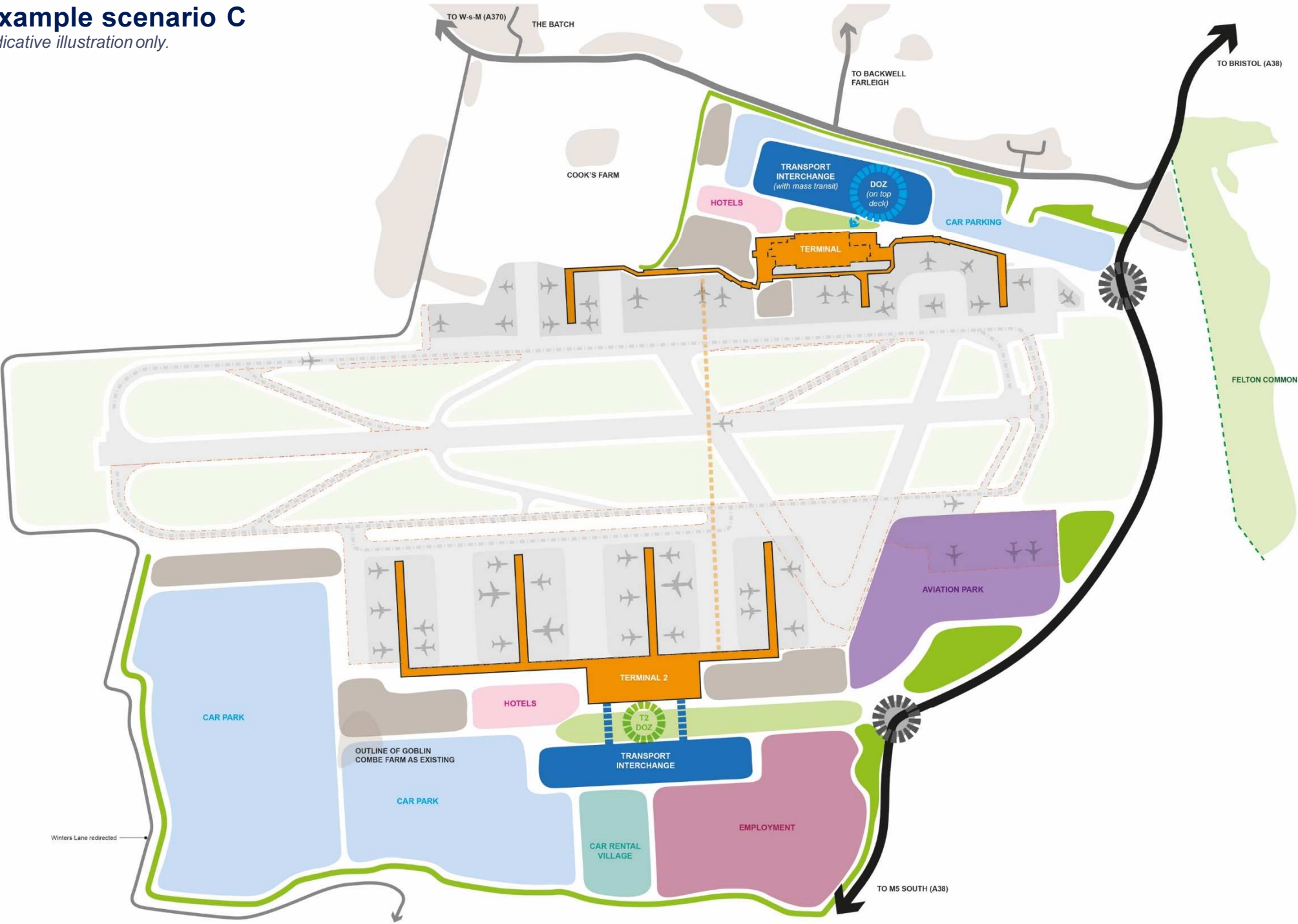
Current planning approval layout



Example scenario A
Indicative illustration only.

Example scenario C

Indicative illustration only.



Consultation – 16 November to 26 January

Venue	Date	Time
Hampton by Hilton Hotel (Bristol Airport)	Tuesday 28 November	3 pm–8pm
Hans Price, Conference Centre (Weston-super-Mare)	Thursday 30 November	11am-2pm
Wroughton Memorial Hall (Wroughton)	Friday 1 December	3pm–7pm
Felton Village Hall (Felton)	Tuesday 5 December	11pm –2pm
Engine Shed (Bristol)	Thursday 7 December	11am-2pm
Bristol and Bath Science Park (South Gloucestershire)	Thursday 14 December	11am–2pm
Cleeve Village Hall (Cleeve)	Tuesday 9 January	2pm–5pm
Hangstones Pavilion (Yatton)	Wednesday 10 January	4pm–8pm
Guildhall, Bath	Thursday 11 January	11am–2pm
Backwell Village Hall (Backwell)	Monday 15 January	12pm–3pm
Fear Hall (Keynsham)	Thursday 18 January	11am–2pm
The Old Schoolroom (Chew Magna)	Friday 19 January	4pm–8pm
Hampton by Hilton Hotel (Bristol Airport)	Saturday 20 January	11am–4 pm

Next steps

- Analyse feedback from initial consultation.
- Prepare Draft Master Plan for consultation in spring.
- Publish final Master Plan next winter.
- Application for planning and other consents.

Your airport: your views a world of opportunities



Preparing a new Master Plan: Public consultation

Planning, Housing and Economic Development Policy Development and Scrutiny Panel

Bath & North East Somerset Council

16 January 2018